



Summerfield School News

The Best You Can Be - Everyone, Every Day

DATES FOR YOUR DIARY:

- 2nd October** Yr 6 TRIP
- 4th Oct — 9th Oct** **MK Food Bank Collections**
For Harvest Festival
- 5th October** **School Census Day**
Special Menu from Dolce
- 9th October** **Harvest Festival Assembly**
- 13th October** Yr 4/5 TRIP
STEM
- 18th October** **Parents Evening**
15:30pm—19:30pm
- 19th October** **Parents Evening**
15:30pm—17:30pm
- 20th October** **END of Term**
School closes at 3:15pm for the October Half-Term Break
- 30th October** **INSET Day**
School closed to Pupils
- 31st October** **School OPEN**
Autumn Term (2) 2023

HEADTEACHER NEWS

Dear Parents and Carers,

Firstly, I would like to thank everyone who took the time to reply to our Communication Survey last week. I know that communication is a very difficult thing to get right in terms of the media we use, the frequency we share and how easy it is for you to make your concerns known to us. I was very pleased that, on the whole, we are getting a lot of things right and we will use the feedback to improve things even more for you.

We have been using Trackit now to monitor excellent behaviour and areas of concern in school for the last few weeks. The system allows us to celebrate all the successes your children have as well as to notice any patterns of low level behaviour around school. This then gives us the opportunity to support staff and also to work with you to improve your child's school experience and their ability to engage fully socially and academically. It may uncover incidents that previously would not have been fully addressed and so we thank you for your support in communicating with us to improve Summerfield for everyone.

I cannot believe it is October already next week! We will soon be sharing our Christmas programme of events with you. One of the things the survey highlighted was that you would like to know in advance all the key dates across the year and this is certainly something we will share with you soon. Obviously as a relatively large school, dates may be subject to change but it is always good to have an idea of what is to come throughout the year.

Have a great weekend and best wishes,

Ian Fraser,
Executive Headteacher



The name for the month of October originates from the Latin word "octō", which means "eight". In the Roman calendar, October was the eighth month of the year. When January and February were added to the calendar after the Julian calendar reform, October became the tenth month of the year as we know it now. ☐

The traditional flower of October is the calendula — it symbolises comfort, healing, protection, and grace.

Every year, October ends on the same day as February.

The Anglo-Saxons called October "Winterfylleth" — it means "fullness of winter". The reason they called it that? It's because October has the first full moon of the winter season.



EYFS/KS1

Year One have been working hard in Design and Technology this term.

They learned about how Igloos are built and then designed their own one!

In groups they worked well together to build their own Igloo using sugar cubes.

They discussed and evaluated their Igloos and were very pleased with their efforts.



KS2 Lower

We are on Top of the World in Year 4. We have been working as Geographers, exploring maps and atlases, and finding longitude, latitude and even the Greenwich meridian.

We have travelled to the magnificent Himalayas in English, writing a fact file describing the five highest mountains in the world.

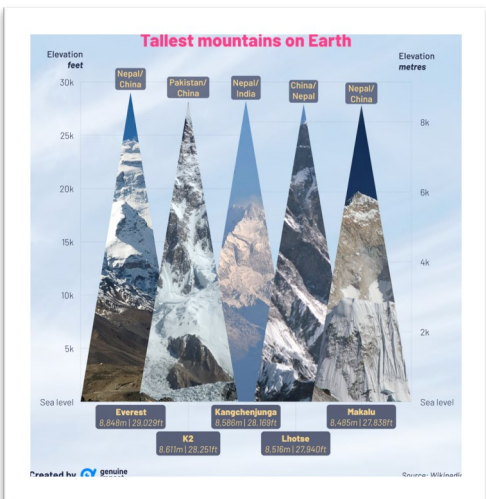
Today we played in a Glockenspiel Orchestra and sung Harvest Festival tunes. We have also been running in Cross Country practice. So many different

experiences and we have been swimming on Wednesday afternoons.

In Maths we have revisited place value and today experienced the Roman number system.

Finally, we are beginning to learn German, our colours and greetings, so "Auf Wiedersehen" from Otters and Badgers.

Danke schön!



KS2 Upper

Year 5 have had a fantastic start to the new academic year. Our topic is It's a Wild Wild World, which means we have been learning all about natural disasters. For our immersion day we made our own volcanoes, learning about the structure of a volcano in the process. We made quite a mess with paper mâché and paint, however the finished products were fantastic. A few days later, we made our own magma and erupted our volcanoes!

Throughout the rest of the topic, we will learn more about Earthquakes, Tsunamis and Hurricanes, how they occur and how people are affected by these naturally occurring events.



House Points



2121



2180



2092



1965

CELEBRATION Zoom Assemblies

Well done to all the children who were awarded in our Celebration Zoom Assemblies!



Aurora, Casey, Divina, Emily, Ethan George, Giorgia, Jesse, Matthew, Nicole, Safwan and Sophia



Aleksandr, Arjun, Aviram, Harry, Fawaz, Fiza, Hamish, Kaci-Marie, Kieran, Mia and Roemer-Faith

Achievements...

Well done to Harry in Sharks class, who recently participated in a Fishing Competition at Etang des Moulinots Lake in France!

There were 6 competitors and on Monday 25th September at 02:30am, Harry caught this huge common Carp weighing in at a whopping 30lb. Congratulations Harry—superb.



Jeans for Genes Day...

Thank you all the children and families who helped support our Jeans for Genes Day on Friday 22nd September. Donations this year were online and we thank all of those who helped raise funds for this vital Charity.



Macmillan...

Thank you to all our wonderful parents / carers who supported this event. Extra cups were needed and only empty plates and crumbs were left! Thank you to FOSS for organising and hosting the Macmillan Coffee Morning. We have managed to raise a fantastic **£180.80**. Special thanks goes to one family for their very kind and generous donation.

If you were unable to attend the Coffee Morning, but would like to donate to our Macmillan JustGiving Page, you can do so here: [DONATE](#)
Thank you

WORLD'S BIGGEST COFFEE MORNING

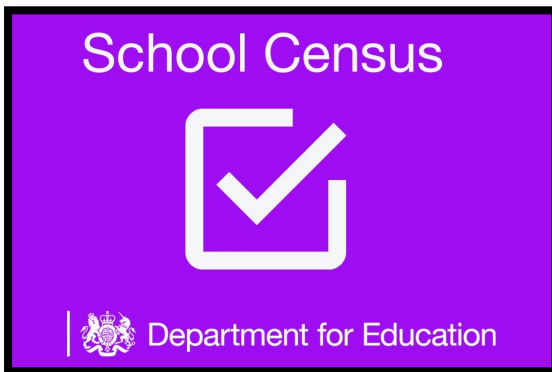
WE ARE MACMILLAN. CANCER SUPPORT



Supporting **WE ARE MACMILLAN. CANCER SUPPORT**



School Census Day...



All Schools have a Census Day which relates to their School funding budget.

The amount of budget received depends on the number of school meals booked.

Census Day this year is on **Thursday 5th October**.

It really helps our funding budget if all families could book a school meal for this day, where possible.

A special menu (see opposite) will be provided for census day from Dolce Catering Company.

Thank you for your support.



dolce
schools catering

COMPETITION

COMPETITION

Lucky Plate Space Day Competition

Children will have a chance to win tickets for 1 child + 1 adult to go for an 'out of this world' day out to **The National Space Centre in Leicester**.

With six interactive galleries, the UK's largest planetarium, and the iconic 42m high Rocket Tower, the award-winning National Space Centre is an awe inspiring experience.

We will pick 10 schools at random to have 1 lucky plate with a winning rocket shaped ticket hidden underneath!



COMPETITION

NOTICES...

DON'T BE LATE

Please be reminded that the School Day starts at **08:45am** with classroom doors closing at 09:00am. **Your child needs to be in class at 08:45am ready to start learning.** Any children arriving after 9:00am will be marked as late. Children start learning at 08:45am and if your child arrives after 9:00am, not only are they late, but they are missing out on 15 minutes of essential learning. **Please make sure you arrive on-time.**



APPOINTMENTS

MEDICAL (Doctors, Opticians, Hospital and Dentist) Must be taken **OUTSIDE** of School hours. Either before 08:45am or after 15:15pm and anytime during school holidays.

Appointments not only disrupt your child's learning, but also the other children in class and the lesson when a child has to leave. Thank you for your co-operation.



APPLYING FOR SECONDARY SCHOOL

MK Council: The Citizens Portal opened on 1 September 2023 for parents and carers to apply online for a secondary school place.

The closing date is **31 October 2023** and all applications must be made before the closing date to receive a school place offer on 1 March 2024 (national offer day)

[FURTHER INFO—APPLY ONLINE HERE](#)



FOSS PTA

Congratulations to the September Winning Number: 53 who was Nelia

You can see the video of the draw on our school website. [HERE](#)

Don't forget that these 50:50 Draws will be held every month. The next one will be at the end of October so watch this space.

You have to be in it to win it!





Monday 9th October

Collecting donations of
tinned items
for MK Food Bank

Required Items

Tinned Meat, Tinned Fish, Tinned Pulses,
Tinned Fruit, Tinned Tomatoes, Long-Life Milk,
Juice/Squash, Spreads, Jams/Peanut Butter,
Biscuits, Tinned Pasta, Rice Pudding, Dried Rice,
Cereal, Sugar, Dried Rice, soup, Loo Roll

Contributions can be made from

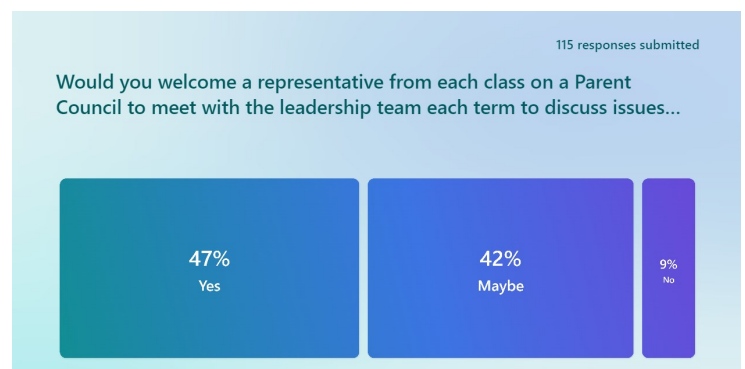
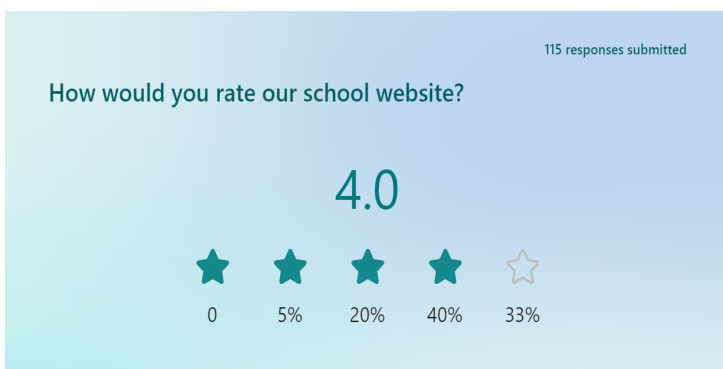
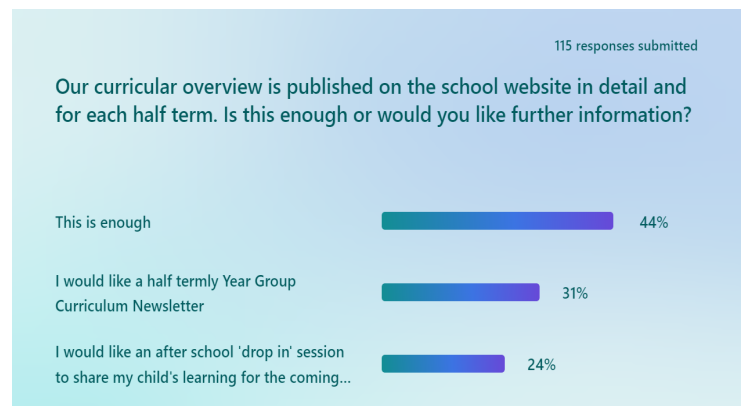
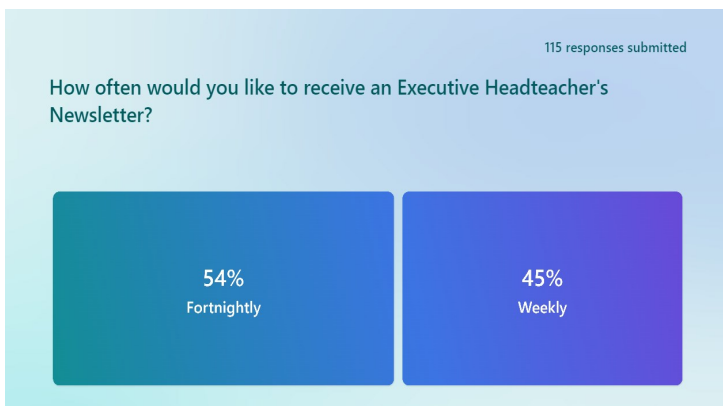
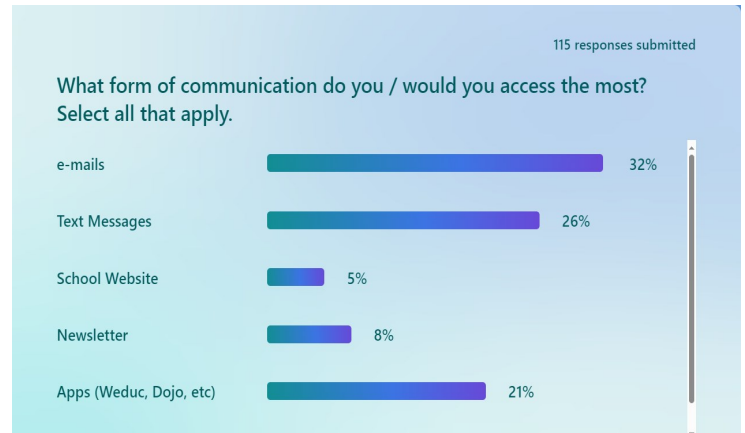
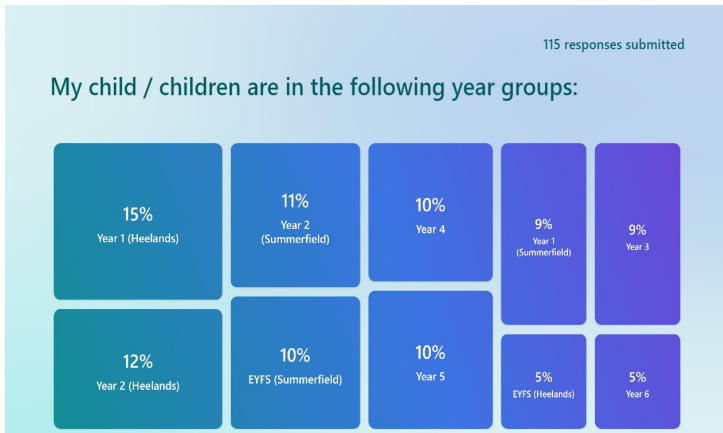
Wednesday 4th October — Monday 9th October

Please hand items into your Class Teacher in the morning.

Thank you.

SURVEY Results.....

Thank you to those parents/carers who completed the recent Communications Survey. Please find below the results.





If you can answer **YES** to any of the options, you may qualify for **Free School Meals / Pupil Premium?**

The School Office will help with your application.

If your application is successful, not only will your child receive free school meals, but our school will receive £1,300 additional funding (per child).

This is called Pupil Premium.

ALL APPLICATIONS ARE CONFIDENTIAL

Already receiving PP—You do not need to re-apply!

- Income Support
- Income-based Jobseeker’s Allowance
- Income-related Employment and Support Allowance
- Support under Part VI of the Immigration and Asylum Act 1999
- The guaranteed element of Pension Credit
- Child Tax Credit (provided you’re not also entitled to Working Tax Credit and have an annual gross income of no more than £16,190)
- Working Tax Credit run-on - paid for 4 weeks after you stop qualifying for Working Tax Credit
- Universal Credit - if you apply on or after 1 April 2018 your household income must be less than £7,400 a year (after tax and not including any benefits you get)

The Best You Can Be - Everyone, Every Day

Summerfield School
Downley Avenue, Bradwell Common, Milton Keynes, MK13 8PG
01908 662 585
office@summerfieldschool.org

Would you like to be a part of our School Community?

VOLUNTEER OPPORTUNITIES

Would you like to help out at our School?

You could help children with:

- Supportive Learning
- Gardening
- Reading
- Sewing/Knitting

Or any other skills you have that you could share with the children!

VOLUNTEER

For further information on volunteering opportunities, please contact our School Office. Thank you

Willen Hospice

Lord Grey Academy

Collecting Stamps!

Summerfield School in Bradwell Common and Lord Grey Academy in Bletchley are collecting NEW and USED Stamps on behalf of the amazing Willen Hospice.

Did you know that volunteers have been collecting and selling used stamps since before the Hospice opened its doors, raising an estimated £100,000? Stamps and albums that have been donated to them, are resold to raise vital funds to support patient care. Despite all the modern ways of communicating, many people still love to send and receive a letter or a card in the mail.

“Next time you receive a card or letter in the post, please ‘Think Willen’. All stamps are welcome, whether they are used or unused. Carefully tear off the area holding the stamp, and keep it aside for us.”

Once you have a few, just drop them into Summerfield School or Lord Grey Academy where we are collecting and we can then deliver to Willen Hospice.

Thank you for your amazing support.

For ANY of our families...

Do come and help yourself to some of our food and hygiene items...



Our School Community Pantry is designed for everyone in mind!

We hope that School families will be able to donate towards our pantry, as well as using it.

Wipes

Tinned Food

Nappies

Dishwasher tablets

Deodorants

Soap / Shampoo

Clean Quality Clothing

Dried Food Packet Items



Laundry Pods/Powder

Toothbrushes

The Best You Can Be - Everyone, Every Day